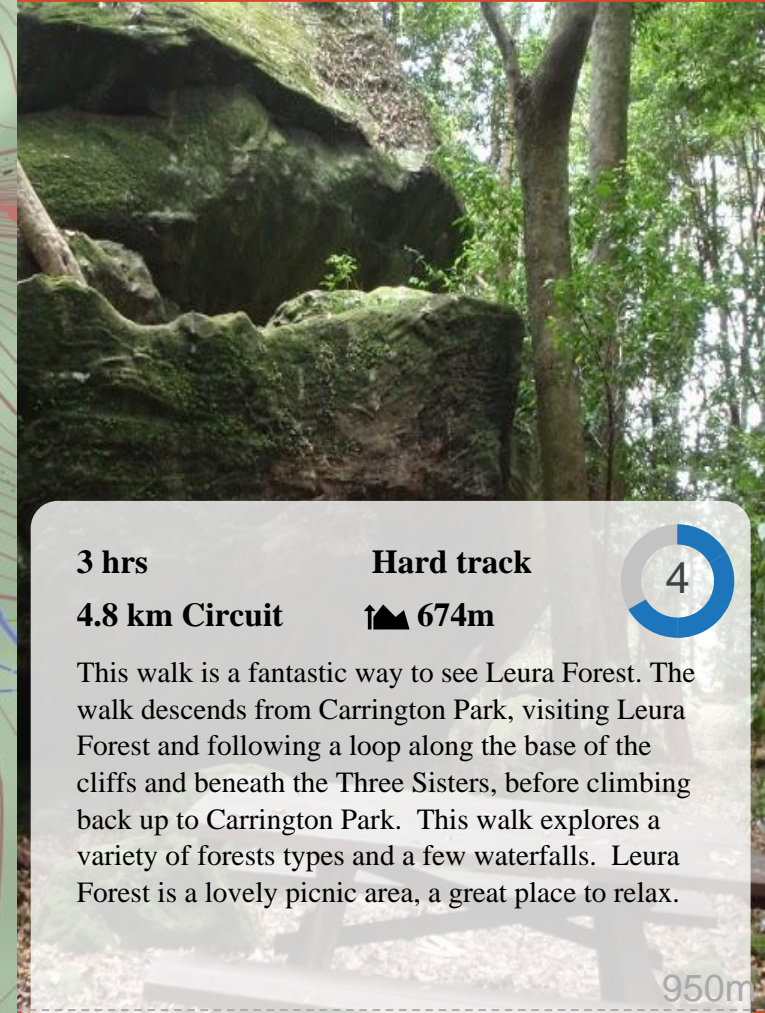




## Carrington Park to Leura Forest and pass loop



**3 hrs**

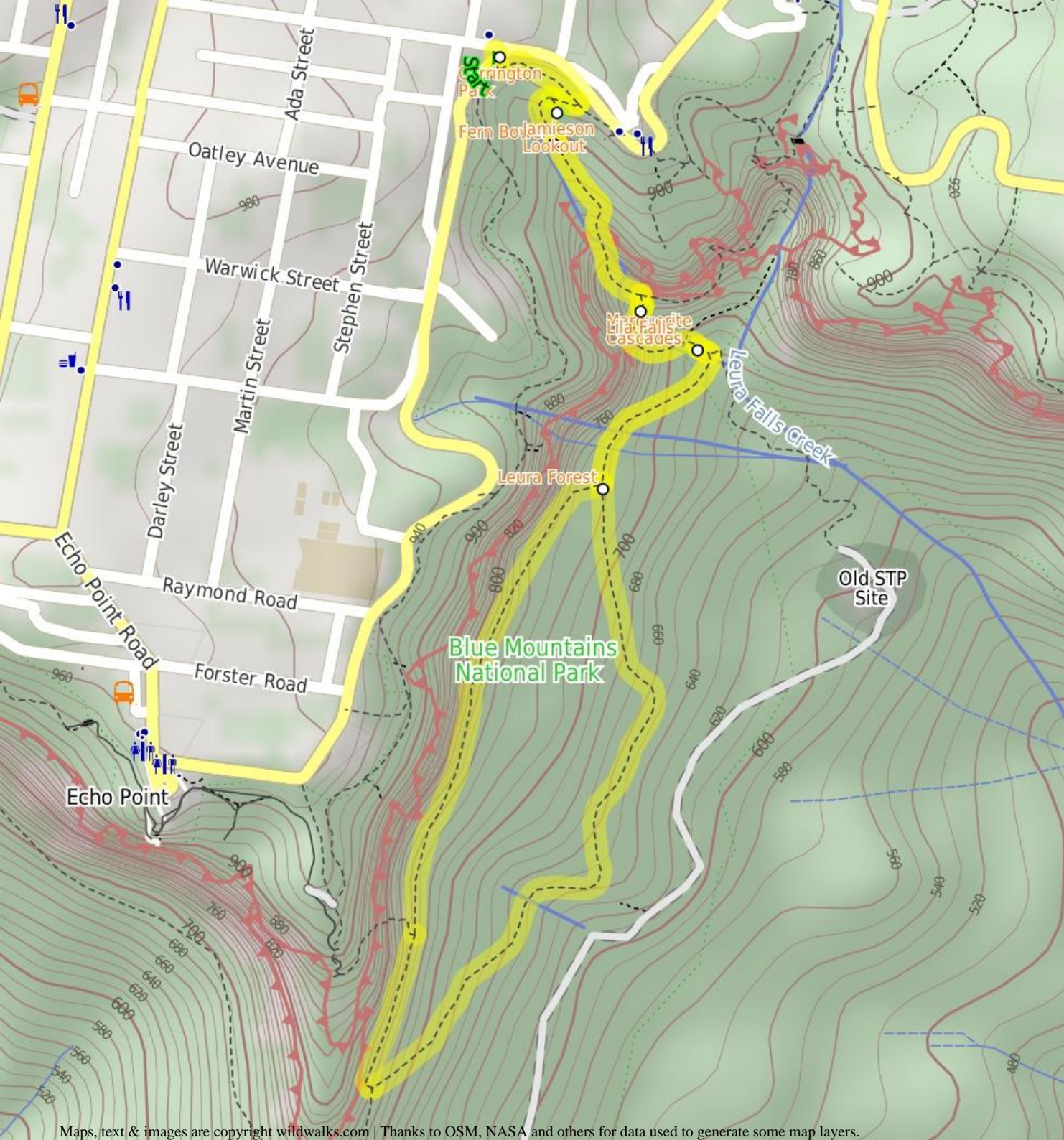
**Hard track**

**4.8 km Circuit**

**674m**

4

This walk is a fantastic way to see Leura Forest. The walk descends from Carrington Park, visiting Leura Forest and following a loop along the base of the cliffs and beneath the Three Sisters, before climbing back up to Carrington Park. This walk explores a variety of forest types and a few waterfalls. Leura Forest is a lovely picnic area, a great place to relax.





## Carrington Park

Carrington Park is a medium-sized park on a traffic island, at the junction of Cliff Road and Merriwa St, Katoomba. The park is partially fenced and has a picnic shelter, picnic tables, garbage bins and children's play equipment.

## Jamieson Lookout

Jamieson Lookout is a fenced lookout at the east end of the Federal Pass track, and just off Prince Henry Cliff Walk. The lookout has a bench seat and provides great views up the Jamison Valley, along Kings Tableland escarpment and past Mount Solitary. The lookout is perched up on a large rock buttress, giving views unobscured by trees.

## Fern Bower

Fern Bower is an especially pleasant part of the Blue Mountains National Park, protected from heat and providing a great environment for fern trees, bracken ferns and moss to thrive. Fern Bower is a signposted area along the Federal Pass walking track, just below Jamieson Lookout and next to Linda Creek. This is a nice place to stop, rest and enjoy the bird noises.

## Lila Falls

Lila Falls is a thin waterfall on Linda Creek. The Federal Pass crosses the creek (on a bridge) in front of these falls, just below the intersection with the amphitheatre. The waterfall is not the most spectacular one in this valley, but it is a nice cool spot to catch your breath.

## Marguerite Cascades

Marguerite Cascades are a series of small cascades finishing with a taller waterfall of a few metres height, dropping into a shallow sandy pool. The cascades are on Linda Creek and a small bridge crosses the creek at the base of the falls as part of the Federal Pass walking track. The cascades are a nice place to sit and listen to the water running and the local birds in this cool shady area.

## Leura Forest

Leura Forest is a great picnic area in the Jamison Valley at the junction of the Federal Pass and Dardenelles Tracks. This place was home to a popular tea house (also known as 'Lady Carrington Dining Hall') from the late 1800's. Today walkers can still enjoy the historic rotunda and the foundations of the original tea house. The picnic area provides a great rest spot under the shade of the lilli pilli and coachwood forest.

## Before You walk

Bushwalking is fun and a wonderful way to enjoy our natural places. Sometimes things go bad, with a bit of planning you can increase your chance of having an enjoyable and safer walk. Before setting off on your walk check

- 1) Weather Forecast ([BOM Central Tablelands District](#))
- 2) Fire Dangers ([Greater Sydney Region](#))
- 3) Park Alerts ([Blue Mountains National Park](#))
- 4) Research the walk to check your party has the skills, fitness and equipment required
- 5) Agree to stay as a group and not leave anyone to walk solo

## Think before you TREK

The 'Think before you TREK' program developed by NSW Police & NPWS promotes the benefits of planning ahead for your bushwalking trip by using an easy to remember acronym:

- T** Take adequate supplies of food, water, navigation and first aid equipment.
- R** Register your planned route and tell friends and family when you expect to return.
- E** Emergency beacon (PLB's) should be carried on walks with significant gaps in mobile coverage (check terrain profile).
- K** Keep to your planned route and follow the map and walking trails.

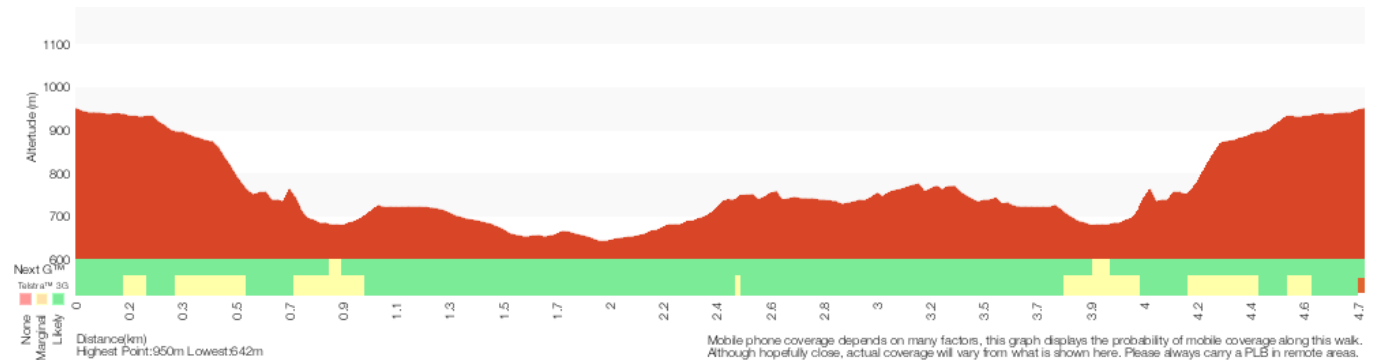
## Topo Maps

The maps provided on wildwalks are helpful, but there are times where you may need maps covering a broader area. Maps that cover this walk include;

**1:50 000 Map Series:**Six Foot Track

**1:25 000 Map Series:**89301S KATOOMBA

**1:100 000 Map Series:**8930 KATOOMBA



## Grade

This walk has been graded using the AS 2156.1-2001. The overall grade of the walk is determined by the highest classification along the whole track.



Grade 4/6  
Hard track

<b>Length</b>	4.8 km Circuit
<b>Time</b>	3 hrs
<b>Quality of track</b>	Rough track, where fallen trees and other obstacles are likely (4/6)
<b>Signs</b>	Directional signs along the way (3/6)
<b>Experience Required</b>	No experience required (1/6)
<b>Weather</b>	Weather generally has little impact on safety (1/6)
<b>Infrastructure</b>	Limited facilities, not all cliffs are fenced (3/6)

### Are you ready to have fun?

Please ensure you and your group are well prepared and equipped for all possible hazards and delays. Check park closures, weather information and Fire Danger Rating before setting out. Optional side trips and alternate routes noted are not included in this walks overall grade, length or time estimate. Please allow extra time for resting and exploring areas of interest. The authors, staff and owners of wildwalks take care in preparing this information but will not accept responsibility for any inconvenience, loss or injury you may experience. Please take care, have fun - Happy Walking.

**Getting there** You can get to Carrington Park (gps: -33.7202, 150.3174) by car, train or bus. Car: There is free parking available.

This is a circuit, so you will finish back at the start.

Find up to date and more information including; travel directions, weather, park closures and walker feedback at <http://wild.tl/cptlf>

#### 0 | Carrington Park

Carrington Park is a medium-sized park on a traffic island, at the junction of Cliff Road and Merriwa St, Katoomba. The park is partially fenced and has a picnic shelter, picnic tables, garbage bins and children's play equipment.

#### 0 | Carrington Park

*(230 m 5 mins)* From Carrington Park, the walk crosses Cliff Drive and goes down the stairs and past the sign for 'Blue Mountains National Park'. The walk continues down the stairs until reaching an intersection signposted with the way to 'Echo Point' or 'Leura Cascades'.

Turn left: From the intersection, this walk follows the 'Leura Cascades 1km' sign down the wooden steps and along the bush track, winding through the forest until coming to the signposted intersection of the 'Leura Forest' Track. Turn right: From the intersection, this walk follows the 'Leura Forest' sign along the bush track, winding down the hill for a short while before dropping down a set of wooden steps, to the signposted intersection with the 'Jamieson Lookout' track.

#### 0.23 | Optional sidetrip to Jamieson Lookout

*(20 m 1 mins)* Turn sharp left: From the intersection, this walk follows the 'Jamieson Lookout' sign along the short bush track to the rock shelf at the Jamieson Lookout. At the end of this side trip, retrace your steps back to the main walk then Veer left.

#### 0.23 | Jamieson Lookout

Jamieson Lookout is a fenced lookout at the east end of the Federal Pass track, and just off Prince Henry Cliff Walk. The lookout has a bench seat and provides great views up the Jamieson Valley, along Kings Tableland escarpment and past Mount Solitary. The lookout is perched up on a large rock buttress, giving views unobscured by trees.

#### 0.23 | Int of Federal Pass and Jamieson Lookout Tracks

*(90 m 3 mins)* Continue straight: From the intersection, this walk follows the dirt path, heading down the long set of wooden and rocky steps. The walk winds down past a picnic chair under a cliff overhang, and continues down the steps into the valley and through the forest to the Fern Bower information sign.

#### 0.32 | Fern Bower

Fern Bower is an especially pleasant part of the Blue Mountains National Park, protected from heat and providing a great environment for fern trees, bracken ferns and moss to thrive. Fern Bower is a signposted area along the Federal Pass walking track, just below Jamieson Lookout and next to Linda Creek. This is a nice place to stop, rest and enjoy the bird noises.

#### 0.32 | Fern Bower

*(320 m 13 mins)* Continue straight: From the information sign, the walk follows the track down the steps, passing a 'Rich History' information sign before coming down to the signposted intersection with the Amphitheatre track, at the top of a metal staircase.

#### 0.64 | Int of Federal Pass and the Amphitheatre track

*(20 m 1 mins)* Turn right: From the intersection, this walk follows the 'Federal Pass Leura Forest' sign down the long metal staircase, to cross the bridge over Linda Creek in front of Lila Falls.

#### 0.66 | Lila Falls

Lila Falls is a thin waterfall on Linda Creek. The Federal Pass crosses the creek (on a bridge) in front of these falls, just below the intersection with the amphitheatre. The waterfall is not the most spectacular one in this valley, but it is a nice cool spot to catch your breath.

#### 0.66 | Lila Falls crossing

*(180 m 11 mins)* Continue straight: From the Lila Falls, this walk follows the track heading down the hill, winding down a wooden walkway keeping the creek to the left. The track hugs the rock wall and passes under a shallow overhang. The walk continues down a staircase, then turns back down into the gully where it come to the taller and slender Linda Falls. After passing Linda Falls the walk follows the wooden steps down through the gully, crossing the creek again before heading down to the Marguerite Cascades.

#### 0.84 | Marguerite Cascades

Marguerite Cascades are a series of small cascades finishing with a taller waterfall of a few metres height, dropping into a shallow sandy pool. The cascades are on Linda Creek and a small bridge crosses the creek at the base of the falls as part of the Federal Pass walking track. The cascades are a nice place to sit and listen to the water running and the local birds in this cool shady area.

#### 0.84 | Marguerite Cascades

*(320 m 11 mins)* Continue straight: From the 'Marguerite Cascades', this walk follows the timber steps downhill, winding steeply for a short while until coming to an intersection with a faint track, marked with a timber 'Federal Pass' sign, just beside a foot bridge.

Veer right: From the intersection, this walk crosses Linda Creek just below a pleasant cascade using the foot bridge with a handrail. This walk then continues along the bush track that winds along the valley floor, to the signposted 'Leura Forest'. From here, the walk continues along the wide bush track, passing a few picnic tables, and winding through the forest to an open area with a large gazebo and an information sign at the intersection of the Federal Pass and the Dardenelles tracks.

#### 1.16 | Leura Forest

Leura Forest is a great picnic area in the Jamieson Valley at the junction of the Federal Pass and Dardenelles Tracks. This place was home to a popular tea house (also known as 'Lady Carrington Dining Hall') from the late 1800's. Today walkers can still enjoy the historic rotunda and the foundations of the original tea house. The picnic area provides a great rest spot under the shade of the lilli pilli and coachwood forest.

#### 1.16 | Leura Forest (Int of Federal Pass and Dardenelles

*(1.3 km 36 mins)* Continue straight: From Leura Forest, the walk follows the 'Federal Pass' sign towards 'Scenic Railway'. Shortly after crossing a small creek using a little bridge, the track begins to steadily go downhill then flatten out. The environment surrounding the bush track at this point is quite dense and, while very pretty, it is difficult to see views of the surrounding area, although there are occasional glimpses of Sublime Point Service Trail

on the left. After a while, the track begins to steadily climb to a signposted intersection with 'Dardenelles Pass'. There are several signposts and a bench seat.

#### 2.44 | Int of Federal Pass, Scenic Railway and Dardenelle

*(290 m 10 mins)* Turn right: From the intersection, the walk follows the sign pointing along the 'Dardenelles Track' towards the 'Giant Steps' - this is the upper track, keeping the main cliffs on the left. After the first short rise, the track flattens out and continues with some great views over the valley. At several points, small seats have been installed to enjoy these views. The track soon comes to an intersection signposted as the 'Giant Staircase'.

#### 2.73 | Bottom of Giant Staircase

*(370 m 27 mins)* Continue straight: From the bottom of the Giant Staircase, this walk follows the Dardenelles Pass sign towards 'Leura Forest', keeping the main cliff face on the left. There are occasional good views out over the valley to the east. Gradually, the track begins to descend and becomes more shady. In this section of track, there are often fallen logs across the track, which will need to be climbed over. Gradually, the track descends down behind the pergola at Leura Forest.

#### 3.61 | Leura Forest

*(300 m 10 mins)* Turn left: From the gazebo, this walk follows the wide bush track past the information sign and through the forest, passing a few picnic tables and coming to the Leura Forest signpost. From here the walk continues along the wide track to cross Linda Creek in a timber foot bridge with a handrail. On the other side of the creek this walk comes to an intersection with a faint track, marked with a 'Federal Pass' sign.

#### 3.91 | Lower Linda Creek Falls

*(200 m 12 mins)* Veer left: From the intersection, this walk follows the 'Prince Henry Cliff Walk' sign up the timber steps keeping the cascade to your left. The track leads steeply uphill for a short while, to come to the signposted 'Marguerite Cascades'.

Continue straight: From Marguerite Cascades, this walk climbs steeply up the wooden steps, then turns left and crosses Linda Creek. These steps climb to a bridge, where the walk passes the tall and slender Linda Falls. From Linda Falls the walk heads up the wooden and metal staircases. The walk then follows the wooden boardwalk that hugs the side of a rock wall under a shallow overhang before heading up some more steps and soon coming to a small bridge crossing Linda Creek in front of Lila Falls.

#### 4.1 | Lila falls crossing

*(20 m 1 mins)* Continue straight: From the Lila Falls, this walk crosses the bridge and heads up the metal staircase. At the top of this climb the walk comes to signposted intersection with the 'Amphitheatre track'.

#### 4.12 | Int of Federal Pass and the Amphitheatre track

*(320 m 13 mins)* Turn left: From the intersection, the walk follows the 'Prince Henry Cliff Walk' sign up the timber steps, keeping the valley on the right. The walk winds up the long wooden steps through the rainforest, until it reaches the Fern Bower information sign.

#### 4.44 | Fern Bower

*(90 m 3 mins)* Continue straight: From the information sign, this walk follows the bush track, heading up the long set of wooden steps that wind up through the forest. The walk passes a picnic chair under a rocky overhang on the right, and continues up to the top of the valley, where it comes to the intersection with the Jamieson Lookout track.

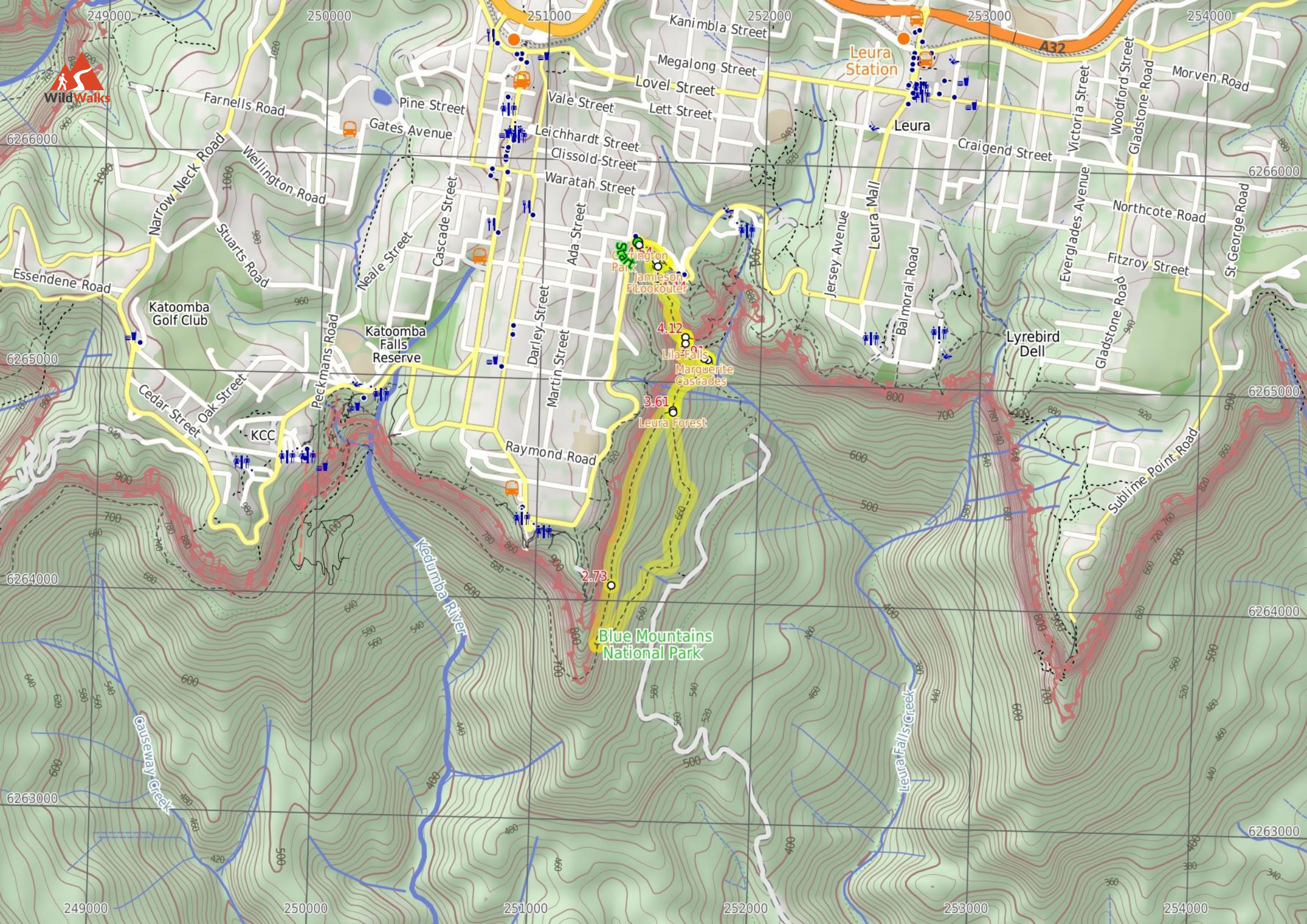
#### 4.54 | Int of Federal Pass and Jamieson Lookout Tracks



(230 m 5 mins) Continue straight: From the intersection, this walk heads up the wooden steps and follows the bush track, winding up the gentle hill to the signposted intersection with the 'Prince Henry Cliff Walk'.  
Turn left: From the intersection, the track follows the 'Echo Point' sign along the bush track, winding through the forest for a short while before climbing up a set of wooden steps, to the intersection with the Carrington Park Track (not signposted).  
Turn right: From the intersection, the walk follows the bush track up the stairs. Just past the sign for 'Blue Mountains National Park', the track emerges onto Cliff Drive. Crossing the road, the walk goes into Carrington Park.









## Summary navigation sheet for the Carrington Park to Leura Forest and pass loop



km	From	Up/Dwn	Length	Initial directions (Use full tracknotes and maps for more detail)
Start	Carrington Park -33.7202,150.3174 (GR Katoomba, 514656)	5 -22	230 m 5 mins	From Carrington Park, the walk crosses Cliff Drive and goes down the stairs and past the sign for 'Blue Mountains National Park'.
0.23	Int of Federal Pass and Jamieson Lookout Tracks -33.721,150.3183 (GR Katoomba, 515655)	0 -6	20 m 1 mins	Optional sidetrip to Jamieson Lookout. Turn sharp left: From the intersection, this walk follows the 'Jamieson Lookout' sign along the short bush track to the rock shelf at the Jamieson Lookout.
0.23	Int of Federal Pass and Jamieson Lookout Tracks -33.721,150.3183 (GR Katoomba, 515656)	0 -36	90 m 3 mins	Continue straight: From the intersection, this walk follows the dirt path, heading down the long set of wooden and rocky steps.
0.32	Fern Bower -33.7217,150.3184 (GR Katoomba, 515655)	10 -150	320 m 13 mins	Continue straight: From the information sign, the walk follows the track down the steps, passing a 'Rich History' information sign before coming down to the signposted intersection with the Amphitheatre track, at th...
0.64	Int of Federal Pass and the Amphitheatre track -33.7241,150.3198 (GR Katoomba, 517652)	0 -18	20 m 1 mins	Turn right: From the intersection, this walk follows the 'Federal Pass Leura Forest' sign down the long metal staircase, to cross the bridge over Linda Creek in front of Lila Falls.
0.66	Lila Falls crossing -33.7243,150.3198 (GR Katoomba, 517652)	37 -90	180 m 11 mins	Continue straight: From the Lila Falls, this walk follows the track heading down the hill, winding down a wooden walkway keeping the creek to the left.
0.84	Marguerite Cascades -33.725,150.3207 (GR Katoomba, 517651)	50 -14	320 m 11 mins	Continue straight: From the 'Marguerite Cascades', this walk follows the timber steps downhill, winding steeply for a short while until coming to an intersection with a faint track, marked with a timber 'Federal Pas...
1.16	Leura Forest (Int of Federal Pass and Dardenelles Tracks) -33.7271,150.3192 (GR Katoomba, 516649)	117 -99	1.3 km 36 mins	Continue straight: From Leura Forest, the walk follows the 'Federal Pass' sign towards 'Scenic Railway'.
2.44	Int of Federal Pass, Scenic Railway and Dardenelles Tracks -33.7367,150.3155 (GR Katoomba, 513638)	36 -33	290 m 10 mins	Turn right: From the intersection, the walk follows the sign pointing along the 'Dardenelles Track' towards the 'Giant Steps' - this is the upper track, keeping the main cliffs on the left.
2.73	Bottom of Giant Staircase -33.7343,150.3161 (GR Katoomba, 513641)	89 -108	870 m 27 mins	Continue straight: From the bottom of the Giant Staircase, this walk follows the Dardanelles Pass sign towards 'Leura Forest', keeping the main cliff face on the left.
3.61	Leura Forest -33.7271,150.3192 (GR Katoomba, 516649)	9 -50	300 m 10 mins	Turn left: From the gazebo, this walk follows the wide bush track past the information sign and through the forest, passing a few picnic tables and coming to the Leura Forest signpost.
3.91	Lower Linda Creek Falls -33.725,150.3209 (GR Katoomba, 518651)	95 -37	200 m 12 mins	Veer left: From the intersection, this walk follows the 'Prince Henry Cliff Walk' sign up the timber steps keeping the cascade to your left.
4.10	Lila falls crossing -33.7243,150.3198 (GR Katoomba, 517652)	18 0	20 m 1 mins	Continue straight: From the Lila Falls, this walk crosses the bridge and heads up the metal staircase.
4.12	Int of Federal Pass and the Amphitheatre track -33.7241,150.3198 (GR Katoomba, 517652)	150 -10	320 m 13 mins	Turn left: From the intersection, the walk follows the 'Prince Henry Cliff Walk' sign up the timber steps, keeping the valley on the right.
4.44	Fern Bower -33.7217,150.3184 (GR Katoomba, 515655)	36 0	90 m 3 mins	Continue straight: From the information sign, this walk follows the bush track, heading up the long set of wooden steps that wind up through the forest.
4.54	Int of Federal Pass and Jamieson Lookout Tracks -33.721,150.3183 (GR Katoomba, 515655)	22 -5	230 m 5 mins	Continue straight: From the intersection, this walk heads up the wooden steps and follows the bush track, winding up the gentle hill to the signposted intersection with the 'Prince Henry Cliff Walk'.